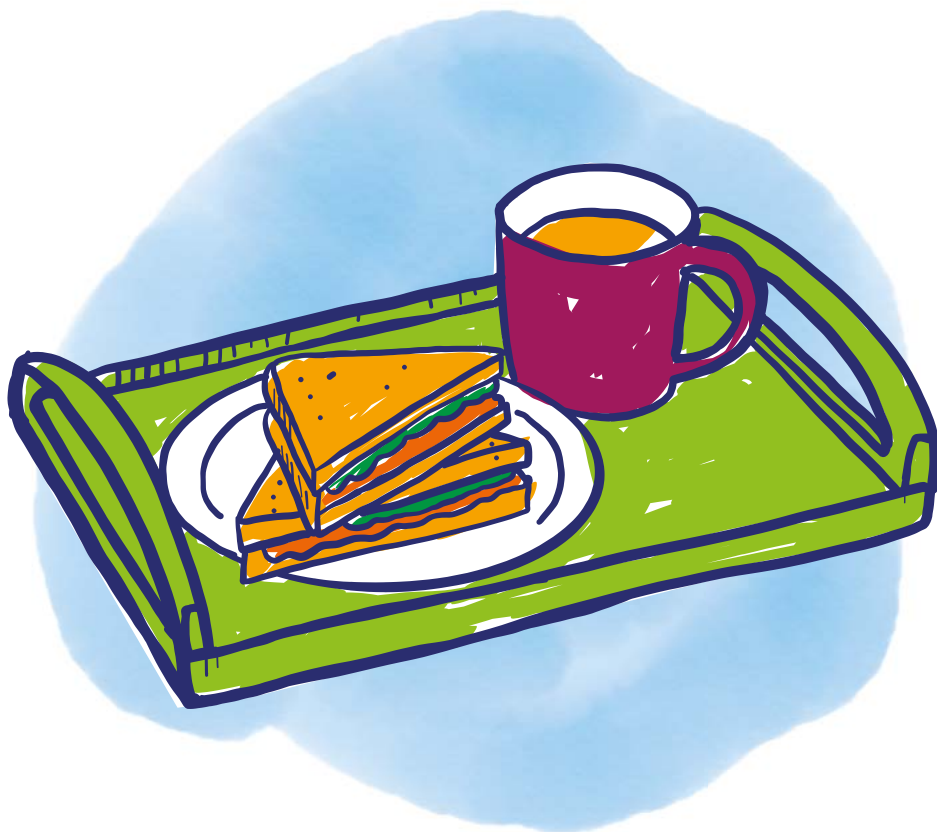


Attendance Allowance



Extra money to help you



What is Attendance Allowance?

Attendance Allowance is extra money available to those who may need extra help at home due to an illness or disability.

If you're over State Pension age (currently 66 years old for men and women) and you need help with your personal care because of physical or mental illness or disability, you may be able to claim Attendance Allowance.

How much is it worth?

There are two different weekly rates. The rate you get depends on the help you need. You'll get:

- **£60.00** (lower rate) if you need help in the day **or** at night
- **£89.60** (higher rate) if you need help both in the day **and** at night.

Claiming Attendance Allowance won't reduce any other income you receive, and it's tax-free. If you're awarded it, you may become entitled to other benefits such as Pension Credit, Housing Benefit or Council Tax Support (also known as Council Tax Reduction), or an increase in these benefits.

You don't have to spend your Attendance Allowance on a carer. Many older people spend the extra money on other types of help in the home, or equipment to help them stay independent. For example, it could help you pay for heating bills, delivery of pre-cooked meals or taxis to get you to and from the shops.

Good to know



Attendance Allowance is based on the help you need – not whether you actually get help or not. And it's up to you how you spend it, it doesn't have to be spent on care.

Can I claim it?

You could be eligible if all of the following apply to you:

- You're over State Pension age (if you're under, you may be eligible for Personal Independence Payment instead).
- You have any type of disability or illness (physical or mental).
- Your disability or illness means you need help with personal care, such as getting washed or dressed, or supervision to keep you safe during the day or night.
- You have needed help for at least six months (if you're terminally ill you can make a claim straight away).

Attendance Allowance isn't means tested so your income and savings don't affect your eligibility.

If you're already claiming Disability Living Allowance (DLA) or Personal Independence Payment (PIP), you'll continue to receive these payments after you reach State Pension age. If you've been asked to claim Attendance Allowance instead of your current benefit, contact your local Age UK. In Wales, contact your local Age Cymru.



“Claiming Attendance Allowance has really helped me regain some of my independence.”

Jimmy, 72



How do I apply?



You can get a claim form by calling the Attendance Allowance helpline on **0800 731 0122**.



You can also download a claim form online at **www.gov.uk/attendance-allowance** and send it by post to the Attendance Allowance Unit.



In Northern Ireland, contact the Disability and Carers Service. Go to **www.nidirect.gov.uk** to download a claim form or call **0800 587 0912**.

Making a claim by phone may be the better option because when you call, the date will be recorded on your form. If your application is successful, your first payment will be from the date of your phone call. However, if you use the online form, your first payment will be based on when your form was received by the Attendance Allowance Unit. This could be a difference of a few weeks' worth of benefits paid.



Filling in the claim form

On the claim form you'll need to describe how your illness or disability affects you.

Most decisions about Attendance Allowance claims are based solely on what you say in the claim form, so it's important you're clear about all the things you can't do or have trouble with because of your condition.

Some applications are turned down because people don't mention, or aren't clear about, how their illness or disability affects their lives.

Good to know

Your local Age UK might be able to help you fill in the form to increase your chances of being awarded Attendance Allowance. In Wales, contact your local Age Cymru.

To find your local Age UK, you can phone Age UK Advice on **0800 169 65 65** or visit **www.ageuk.org.uk**. In Wales, phone Age Cymru Advice on **0300 303 44 98**.

Don't downplay your needs. Explain the effects of your disabilities and health conditions and how they interact with each other.

- Give plenty of information in your own words about your personal circumstances.
- List things that you struggle to do without help, even if you've developed your own ways to cope. Mention if an activity takes you much longer than it would for somebody without a disability, or if it's difficult to do it safely. Include if you need reminding or encouraging to do things.
- Focus on how often you need help. To qualify for the lower rate of Attendance Allowance, you have to show you need help 'frequently' during the day or at night.
- Describe any accidents, falls or occasions when you've hurt yourself.
- If you have good and bad days, complete the form with details of one of the bad days, including how often they happen.
- Attach any supporting information, like doctor's letters, your care plan, or prescription lists.
- If there's a charity that provides help and support for people with your condition or disability, ask them if they have any specific advice on what to include on the claim form.

Attendance Allowance applications don't usually take into account problems with housework, shopping and gardening. If you struggle with carrying out these activities, make sure you give details of other problems as well, as you're unlikely to receive support if your application focuses on these activities. See pages 8-9 for examples of what to include.

Common care needs to include

It's worth thinking about which care needs apply to you before you begin your application form. Here are a few examples of what to consider:

Washing, bathing and looking after your appearance

Do you need help getting in and out of the bath or shower; adjusting shower controls; shaving; putting on skin cream; washing or drying your hair?

Going to the toilet

Do you need help adjusting your clothes after using the toilet; using the toilet during the night; changing clothes or bedding if you have an accident?

Getting dressed or undressed

Do you need help with fastenings, shoelaces and buttons, for example because of arthritis; or with recognising when your clothes are on inside out?

Mealtimes

Do you need any help eating and drinking? For example, if you have sight loss, do you need someone to tell you where the food is on your plate, or read out menus?

Help with medical treatment

Do you need help identifying your tablets; reading and understanding instructions about taking medication; managing a condition such as diabetes; recognising whether your condition is deteriorating; adjusting your hearing aid?

Communicating

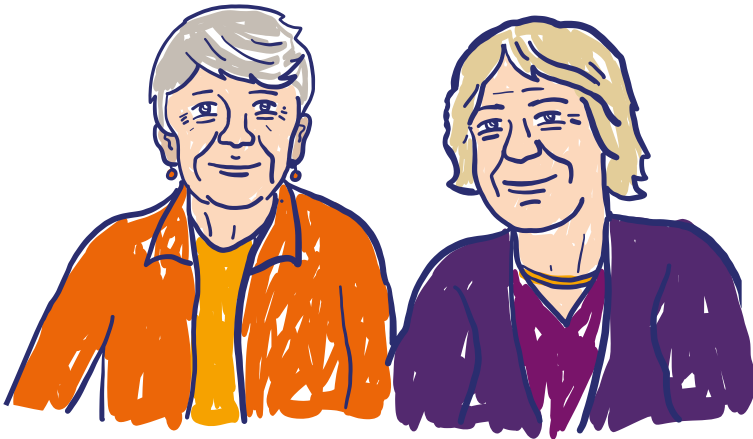
Do you need help understanding or hearing people, or being understood by them; answering the phone; reading and writing letters or emails?

Supervision

Do you need someone to watch over you in case you have a seizure or pass out; lack awareness of danger; get confused, forgetful or disoriented? Could you be a danger to yourself or others, for example by leaving the door unlocked or leaving the gas on?

Getting around safely

Do you need help navigating stairs; getting up from a chair; getting in and out of bed; moving safely from room to room?



“Attendance Allowance changed our lives – now my wife doesn’t have to do everything for me.”

Lisa, 70

What to do next

If you think you may be eligible for Attendance Allowance:

- You can get a claim form from the Attendance Allowance helpline (page 11) or visit **www.gov.uk/attendance-allowance** to download a form online.
- In Northern Ireland, call the Disability and Carers Service on **0800 587 0912** (textphone **028 9031 1092**) or download a claim form at **www.nidirect.gov.uk**.
- Speak to your local Age UK if you would like more information or some help with completing the claim form.
- Claim as soon as possible, as Attendance Allowance can't be backdated to cover any period before the date of your claim.

What if my application is turned down?

- Look at all the common care needs on pages 8-9. Have you missed any out?
- Ask Age UK whether you should challenge the decision.
- Remember that your needs may change, so even if you're not eligible for Attendance Allowance now, you may be able to claim successfully in the future.



Useful organisations

Age UK

We provide advice and information for people in later life through our Age UK Advice Line, publications and website.

In England, contact Age UK Advice: **0800 169 65 65**
Lines are open seven days a week from 8am to 7pm.
www.ageuk.org.uk

In Wales, contact Age Cymru: **0300 303 44 98**
www.agecymru.org.uk

In Northern Ireland, contact Age NI: **0808 808 7575**
www.ageni.org

In Scotland, contact Age Scotland: **0800 124 4222**
www.agescotland.org.uk

Attendance Allowance helpline

Tel: **0800 731 0122**

Textphone: **0800 731 0317**

Disability and Carers Service

Tel: **0800 587 0912**

Textphone: **0800 012 1574**

This information guide has been prepared by Age UK and contains general advice only, it should not be relied on as a basis for any decision or action. Neither Age UK nor any of its subsidiary companies or charities accepts responsibility to ensure any information is up to date and accurate. Please note that the inclusion of named agencies, websites, companies, products, services or publications in this information guide does not constitute a recommendation or endorsement by Age UK or any of its subsidiary companies or charities. Age UK is a charitable company limited by guarantee and registered in England and Wales (registered charity number 1128267 and registered company number 6825798). The registered address is Tavis House, 1–6 Tavistock Square, London WC1H 9NA. Age UK and its subsidiary companies and charities form the Age UK Group, dedicated to helping more people love later life. ID204627 04/21 publication April 2021, next review date April 2022.

What should I do now?

You may want to read some of our relevant factsheets, such as:

- **More money in your pocket**
- **Carer's Allowance**

You can order any of our guides or factsheets by giving our Advice Line a ring for free on **0800 169 65 65** (8am-7pm, 365 days a year).

Our friendly advisers will also be able to help answer any questions.

All of our publications are available in large print and audio formats.

There's plenty of really useful information on our website, too. Visit **www.ageuk.org.uk/moneymatters** to get started



0800 169 65 65
www.ageuk.org.uk

If contact details for your local Age UK are not in the below box, call Age UK Advice free on **0800 169 65 65**.



Age UK is a charitable company limited by guarantee and registered in England and Wales (registered charity number 1128267 and registered company number 6825798). Registered address: Tavis House, 1-6 Tavistock Square, London WC1H 9NA. Age UK and its subsidiary companies and charities form the Age UK Group, dedicated to helping more people love later life. ID204627 04/21